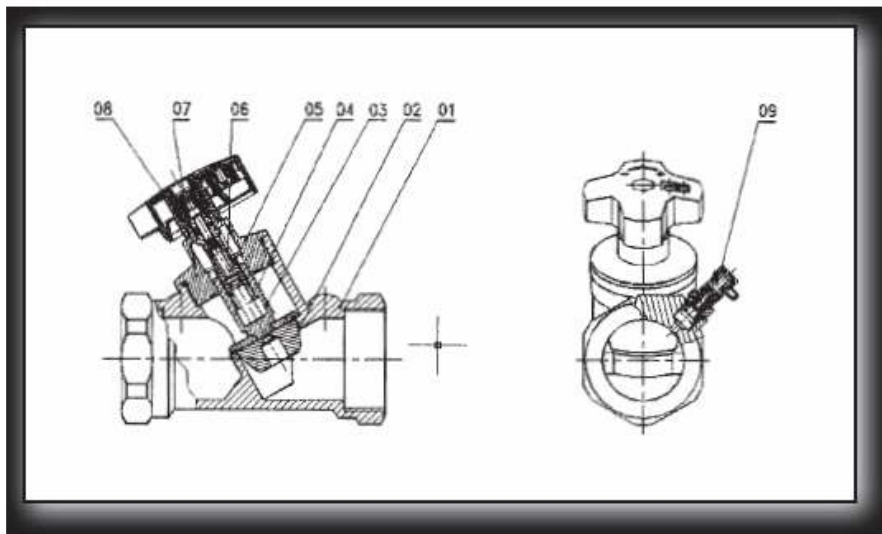


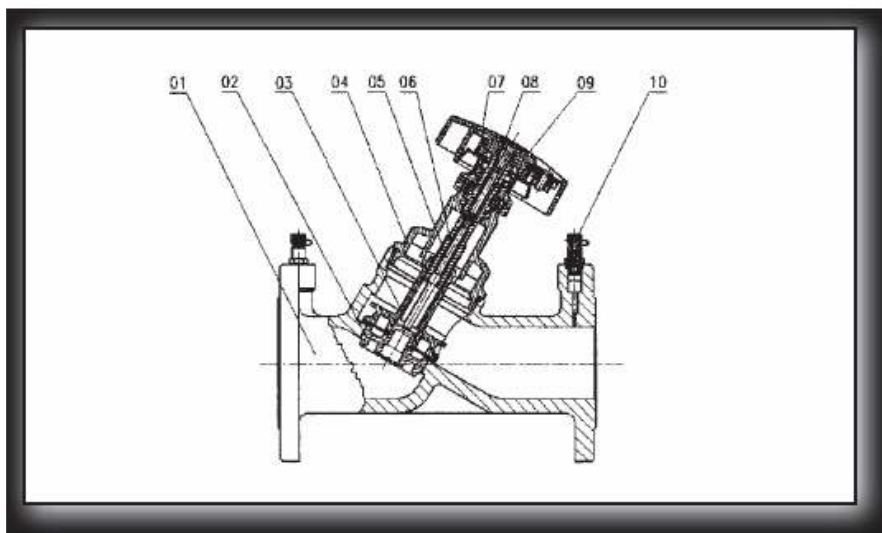
## Valvole di bilanciamento – Balancing Valves

VI 200





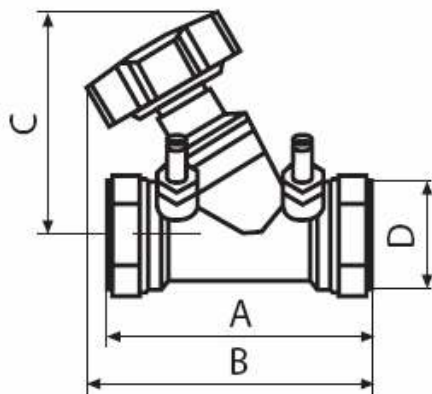
01	corpo - <i>body</i>
02	otturatore - <i>core</i>
03	vite interna <i>rising/down stem</i>
04	sede della chiusura <i>assistant lock stem</i>
05	asta di chiusura <i>locks tem</i>
06	asta - <i>stem</i>
07	coperchio - <i>bonnet</i>
08	manopola - <i>handle</i>
09	attacco piezometrico <i>test nipple</i>



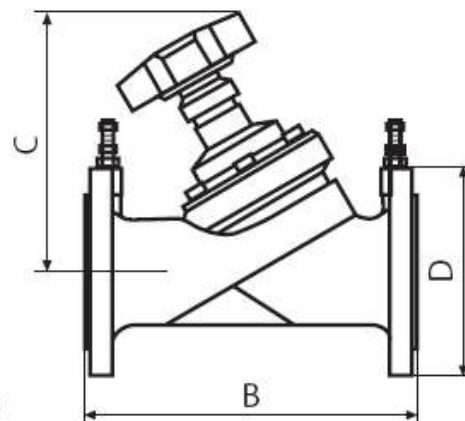
0	corpo - <i>body</i>
0	otturatore - <i>core</i>
0	vite interna <i>rising/down stem</i>
04	coperchio - <i>bonnet</i>
05	asta di chiusura <i>lock stem</i>
06	asta - <i>stem</i>
07	dado del coperchio <i>bonnet nut</i>
08	sede della chiusura <i>assistant lock stem</i>
09	manopola - <i>handle</i>
10	attacco piezometrico <i>test nipple</i>

## MATERIALI / MATERIALS

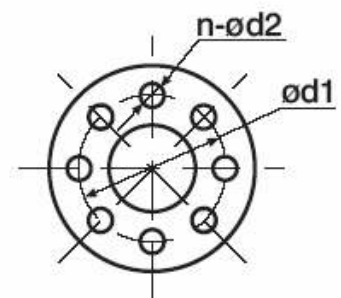
Parte Part	diam. 1/2" - 2	DN 65 - DN 150	DN 200 - DN 300
corpo valvola <i>valve body</i>	ottone <i>brass</i>	ghisa grigia <i>cast iron</i>	ghisa grigia <i>cast iron</i>
otturatore <i>core</i>	ottone <i>brass</i>	ottone <i>brass</i>	acciaio inox <i>stainless steel</i>
sede otturatore <i>core point</i>	ottone <i>brass</i>	ottone <i>brass</i>	acciaio inox <i>stainless steel</i>
coperchio <i>cover</i>	ottone <i>brass</i>	ghisa grigia <i>cast iron</i>	ghisa grigia <i>cast iron</i>
dado sul coperchio <i>nut in cover</i>	=	ottone <i>brass</i>	ottone <i>brass</i>
asta <i>stem</i>	ottone <i>brass</i>	ottone <i>brass</i>	acciaio inox <i>stainless steel</i>
bloccaggio asta <i>lock stem</i>	ottone <i>brass</i>	ottone <i>brass</i>	acciaio inox <i>stainless steel</i>
attacchi piezometrici <i>small pressure valve</i>	ottone <i>brass</i>	ottone <i>brass</i>	ottone <i>brass</i>



DN 15 ~ DN 50



DN 65 ~ DN 300



## DIMENSIONI / DIMENSIONS

Misura Size		Connesioni Ends	Portata <i>Flow ability</i> (m <sup>3</sup> /h)	Cv a valvola aperta <i>Cv at opened valve</i>	DIMENSIONI <i>DIMENSIONS</i>						d <sub>1</sub>	d <sub>2-n</sub>	Peso <i>Weight</i> kgs
					A mm	B mm	C mm	D inch	D mm	E mm			
DN	inch												
15	1/2"	filettate <i>threaded</i>	4.0	5.06	90	113	97	1/2"	=	40	=	=	0.6
20	3/4"		5.5	8.46	96	118	97	3/4"	=	40	=	=	0.7
25	1"		8.5	8.64	105	124	97	1"	=	50	=	=	0.9
32	1" 1/4		11.2	13.37	120	130	105	1" 1/4	=	50	=	=	1.3
40	1" 1/2		19.0	11.34	132	136	107	1" 1/2	=	50	=	=	2.1
50	2"		50.0	2.78	154	=	118	2"	=	60	=	=	2.7
65	2" 1/2	flangiate <i>flanged</i>	85.0	3.95	290	=	237	=	180	=	145	18-4	14.5
80	3"		97.0	6.96	310	=	241	=	195	=	160	18-8	20.3
100	4"		170.0	5.53	350	=	262	=	215	=	180	18-8	28.5
125	5"		268.0	5.43	400	=	303	=	245	=	210	18-8	46.0
150	6"		303.0	8.82	480	=	306	=	280	=	240	22-8	62.0
200	8"		595.0	7.23	380	=	370	=	340	=	295	22-12	110.0
250	10"		890.0	7.88	440	=	410	=	405	=	355	25-12	180.0
300	12"		1374.0	6.86	480	=	450	=	460	=	410	25-12	230.0